

#112 5805 Tern Place

Vernon, BC

MLS 10325503





- » Built in 2001 approx.
- » 2240 square feet
- » 3 bedrooms
- » 2 full bathrooms & 2 half



WELCOME TO #112 5805 TERN PL,

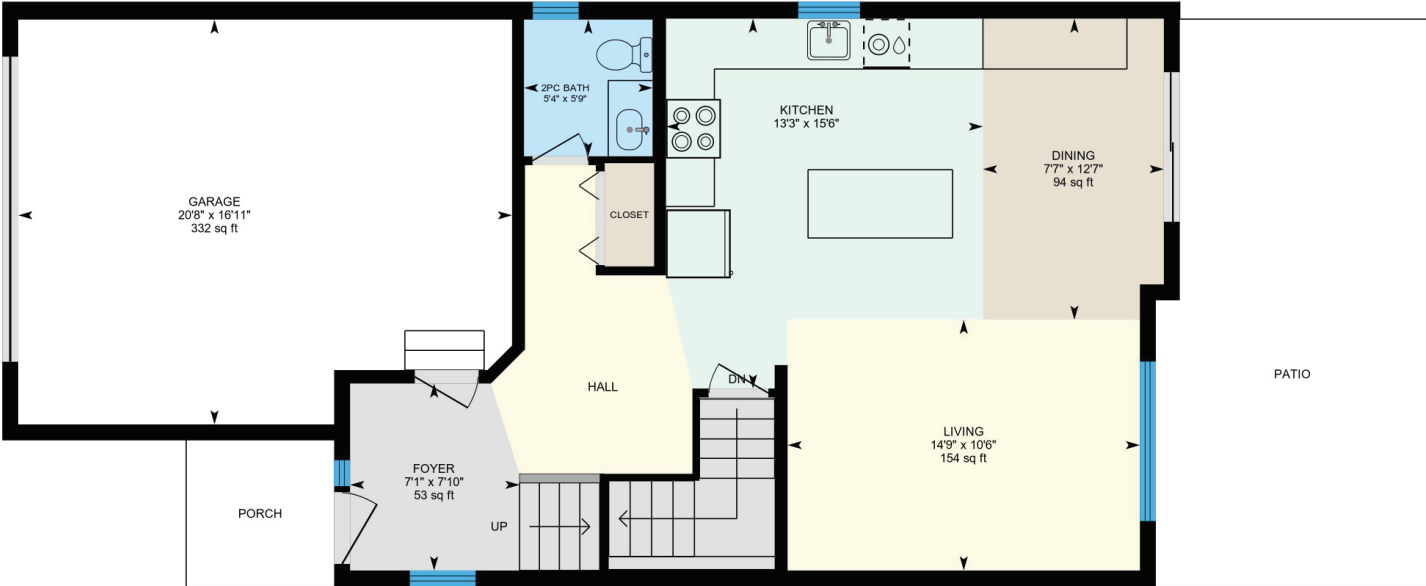
Located in the family-friendly community of single-family homes in Cobblestone Lane, this home offers both the privacy of a detached home and low-maintenance living thanks to a well-run established strata.

This charming home comes with a spacious kitchen with loads of storage, a breakfast bar and access to the covered back patio. The backyard is fenced and features a pergola that allows for year-round outdoor entertaining. The second floor holds all three bedrooms, a full bathroom and ensuite. The finished basement has a rec room, large office, half bath and plenty of storage space.

The quiet cul-de-sac is located close to schools, and shopping and backs onto green space. Strata fees include yard maintenance, snow removal & home insurance.



MAIN FLOOR



SECOND FLOOR



BASEMENT





DISTANCES

SCHOOL 2 min drive HOSPITAL 7 min drive
SHOPPING 4 min drive KELOWNA AIRPORT 34 min drive





OKANAGAN LANDING

Okanagan Landing is a large expansive area with lake and valley views, lake access, boat launches and public beaches. Parts of Okanagan Landing Road run along the shores of the northeastern arm of Okanagan Lake and are located to the south of Tronson Road and the Bella Vista area of Vernon.

Some of Vernon's finest vacation residence developments are located along this road, you will find that include lakefront living in condominium resorts like The Strand, The Seasons, Tuscan Terraces and lakeside vacation homes at The Outback. Okanagan Landing has a mix of single-family homes, townhouse developments, mobile home parks and a retirement community.



We believe in providing outstanding real estate service.

Right from the start, we put our clients and their properties first.

We are committed to real estate excellence.

WWW.MARTYGILBERT.COM



Marty Gilbert

REALTOR

P 250.503.7663
E MARTY@MARTYGILBERT.COM

